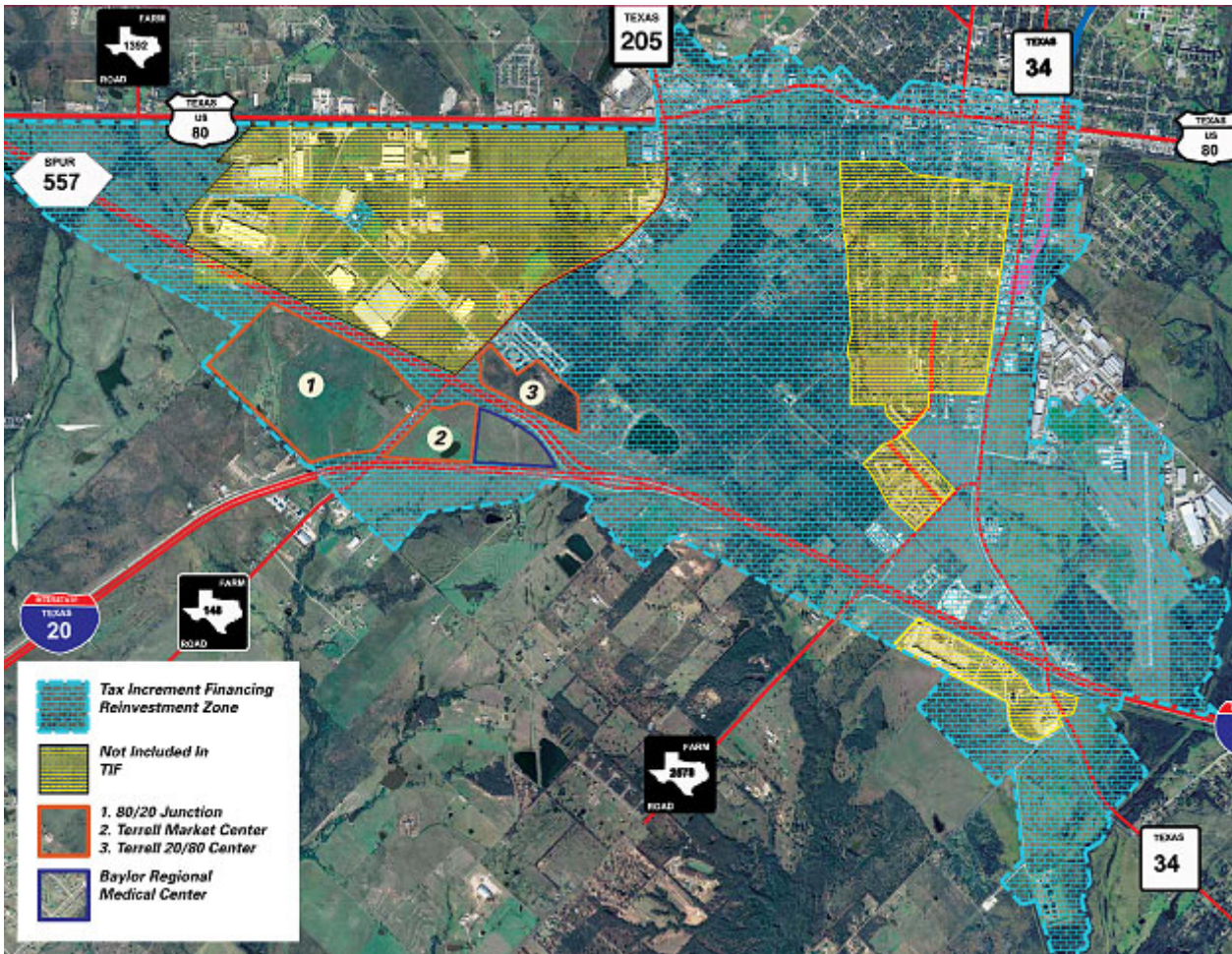




4,500-acre TIF District Map

Tax Increment Finance (TIF) Map



TIF Resources:

[TIF Application](#)

[Public Works](#)

[TIF Development Map](#)

[City of Terrell](#)

[Municipal Development](#)

[Bids Notice](#)

[City Engineer](#)

If you can't find the information you are looking for or have specific questions about building or development in Terrell please contact us:

Charles Fenner

Municipal Development Director
972-551-6600 ext. 247

[Steve Rogers](#)

City Engineer
972-551-6600 ext. 240

Chief Building Official

(972) 551-6600 ext. 300

[Mike Mikeska](#)

Utilities Director
(972) 551-6600 ext. 313

[Ray Dunlap, PCED](#)

President
Terrell Economic Development Corporation
972-524-5704

[Sign up to receive email notifications](#)